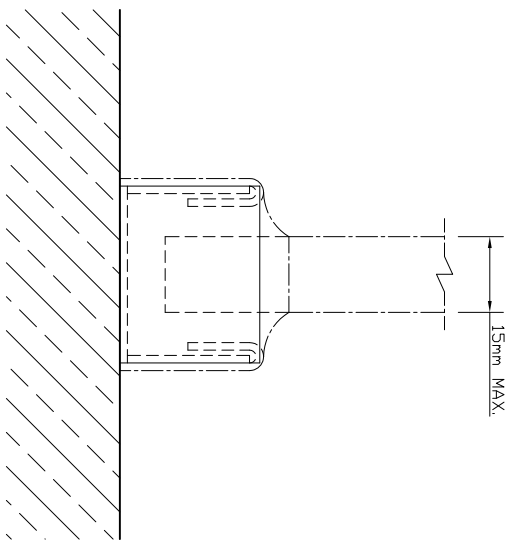


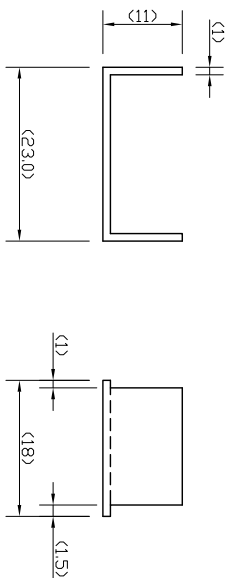
**END VIEW
ON CHANNEL**

(SCALE 1:1 (A4))



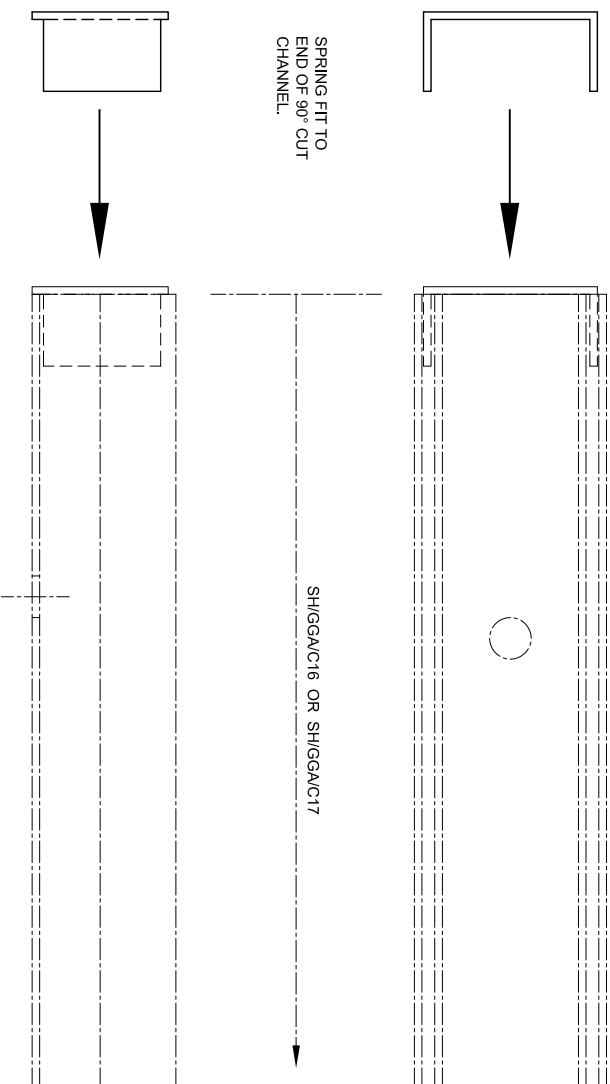
**END CAP
ELEVATIONS**

(SCALE 1:1 (A4))



**INSTALLATION
DETAILS**

(SCALE 1:1 (A4))



The Vision Group,
6 Barnes Close,
Brandon, Suffolk
IP27 0NY

TEL: +44 (0)1842 816086
FAX: +44 (0)1842 815515
WEB: www.spiralhardware.co.uk
E-MAIL: info@spiralhardware.co.uk

Copyright (c) - April 2008. All Rights Reserved

NOTES/SPECIFICATION:

CHANNEL END CAP SUPPLIED IN GRADE 304 STAINLESS STEEL.-

BRUSHED FINISH

GLAZING CHANNEL SUITABLE FOR 15mm max. GLASS PANES

(NOTE CUSTOMER TO PROVIDE REQUIRED FIXINGS. PACKERS ARE NOT SUPPLIED WITH THE CHANNELS AS STANDARD)

PRODUCT REF:	SH/GG/C18
DESCRIPTION:	DIMENSIONED ELEVATIONS AND PRODUCT DETAILS
DRAWING REF:	SH/GG/C18 - 001