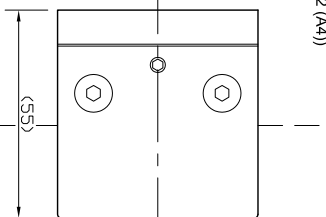
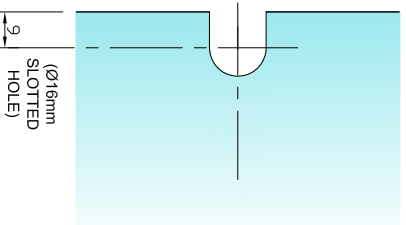


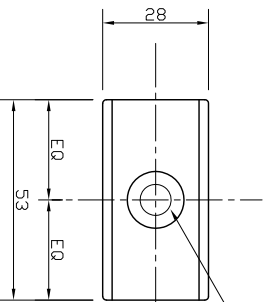
**BACK VIEW
ON FITTING**
(SCALE 1:2 (A4))



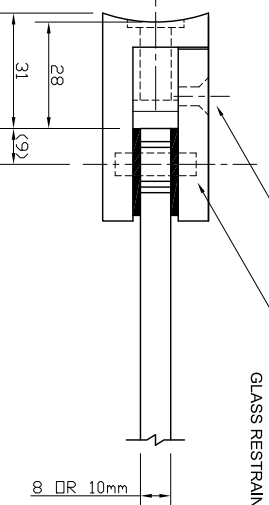
**REQUIRED
GLASS PREP
WITH SECURITY PIN
OPTION ONLY¹**
(SCALE 1:2 (A4))



**REAR VIEW
ON FITTING**
(SCALE 1:2 (A4))



**PLAN VIEW
ON FITTING**
(SCALE 1:2 (A4))

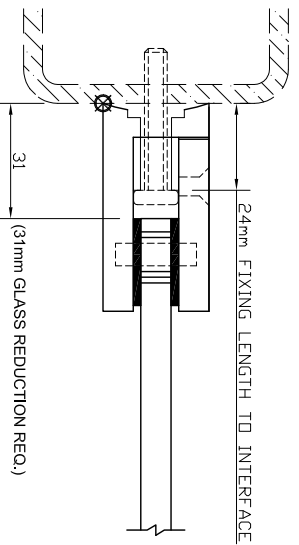


1 No. Ø8.2 HOLE,
SUITABLE FOR
M6 POZI PAN FIXING
(BY OTHERS)

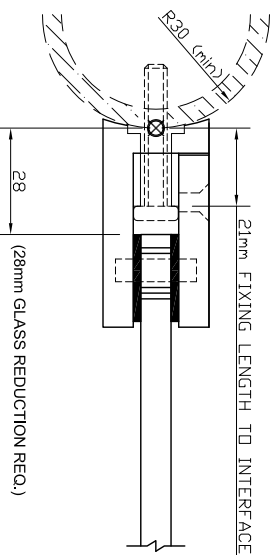
2 No. M5 x 16 HEX
SOCKET CSK SCREWS

OPTIONAL SECURITY
PIN FOR UNSUPPORTED
GLASS RESTRAINT.

**EXAMPLE USE
FLAT FACE FIXED**
(SCALE 1:2 (A4))



**EXAMPLE USE
ON CURVED POSTS**
(SCALE 1:2 (A4))



NOTES/SPECIFICATION:

ALL FITTING COMPONENTS IN GRADE 304 STAINLESS STEEL
(SEE BELOW FOR FINISH OPTIONS)

PRODUCT SUITABLE FOR 8 OR 10mm TOUGHENED GLASS PANE

FITTING SUPPLIED COMPLETE WITH:-

- 1) 4 No. BLACK RUBBER WASHERS TO SUITE SPECIFIED GLASS
- 2) 2 No. M5 X 20mm HEX SOCKET HEAD CSK SETSCREWS

NOTE - INTERFACE M6 POZI PAN FIXINGS TO BE SUPPLIED BY OTHERS
TO SUIT APPLICATION.

SPECIFICATION INSTRUCTIONS:-

- FINISH REQUIREMENT
- B = SATIN/BRUSHED FINISH
- P = POLISHED FINISH

PRODUCT REF: SH / ATB / * / S

DESCRIPTION: DIMENSIONED ELEVATIONS AND
REQUIRED GLASS PREP DETAIL

DRAWING REF: SH/ATB/X/S - 001B

The Vision Group, TEL: +44 (0)1842 816086
6 Barnes Close, FAX: +44 (0)1842 815515
Brandon, Suffolk WEB: www.spiralhardware.co.uk
IP27 0NY E-MAIL: info@spiralhardware.co.uk

Copyright (c) - April 2008. All Rights Reserved