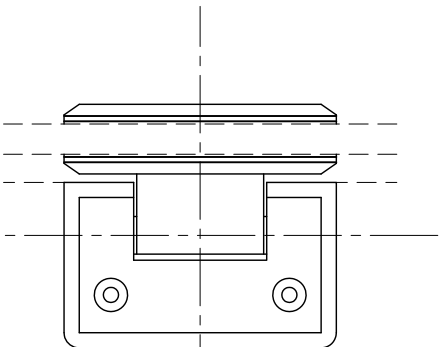
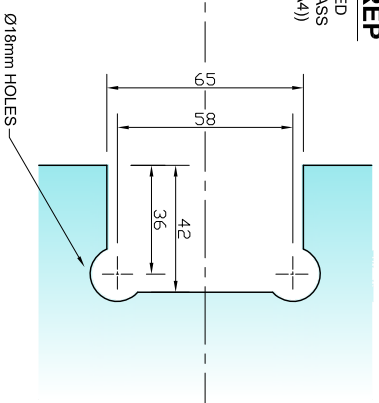


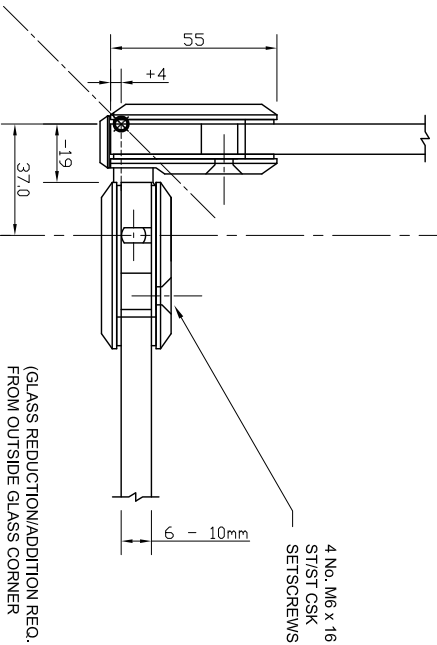
**REAR VIEW
ON HINGE**
(SCALE 1:2.5 (A4))



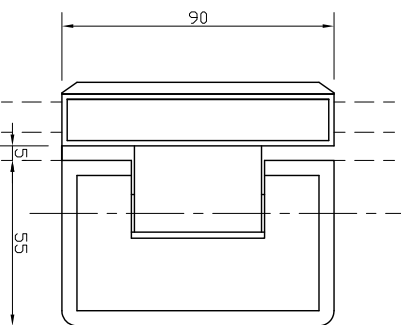
**REQUIRED
GLASS PREP**
TO BOTH FIXED
AND DOOR GLASS
(SCALE 1:2.5 (A4))



**PLAN VIEW
ON HINGE**
(SCALE 1:2.5 (A4))



**FRONT VIEW
ON HINGE**
(SCALE 1:2.5 (A4))




The Vision Group,
6 Barnes Close,
Brandon, Suffolk
IP27 0NY

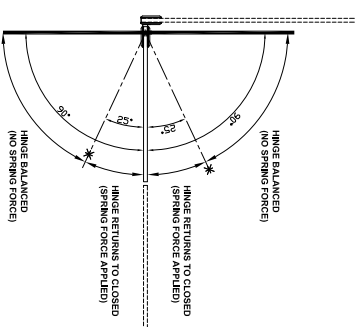
TEL: +44 (0)1842 816086
FAX: +44 (0)1842 815515
WEB: www.spiralhardware.co.uk
E-MAIL: info@spiralhardware.co.uk

Copyright (c) - April 2008. All Rights Reserved

NOTES/SPECIFICATION:

- ALL HINGE COMPONENTS IN CHROME PLATED BRASS.
PRODUCT SUITABLE FOR 6 TO 10mm TOUGHENED GLASS PANES.
HINGE SUPPLIED COMPLETE WITH:-
- 1) 8 No. x 1.25mm TRANSLUCENT RUBBER GLAZING WASHERS.
 - 2) 4 No. M6 x 16mm ST/ST HEX SOCKET HEAD CSK SETSCREWS
 - 3) 1 No. HEX SOCKET ALLEN KEY TO SUIT

(NOTE CUSTOMER TO PROVIDE ALTERNATIVE FIXINGS WHERE REQUIRED)



PRODUCT REF:	SH/APH/H09
DESCRIPTION:	DIMENSIONED ELEVATIONS AND REQUIRED GLASS PREP DETAIL
DRAWING REF:	SH/APH/H09 - 001