

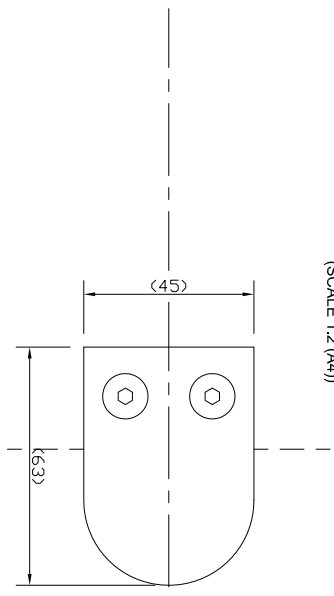


The Vision Group,
6 Barnes Close,
Brandon, Suffolk
IP27 0NY

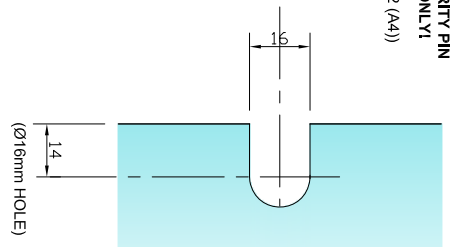
TEL: +44 (0)1842 816086
FAX: +44 (0)1842 815515
WEB: www.spiralhardware.co.uk
E-MAIL: info@spiralhardware.co.uk

Copyright (c) - April 2008. All Rights Reserved

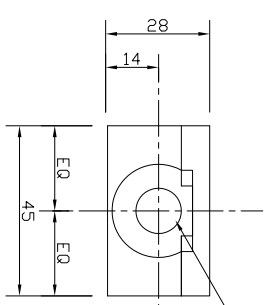
**BACK VIEW
ON FITTING**
(SCALE 1:2 (A4))



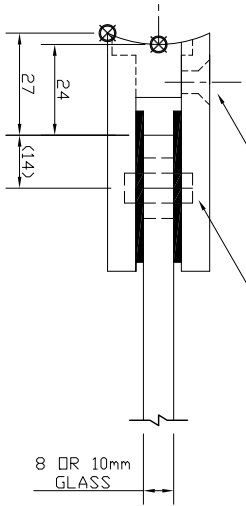
**REQUIRED
GLASS PREP
WITH SECURITY PIN
OPTION ONLY¹**
(SCALE 1:2 (A4))



**PLAN VIEW
ON FITTING**



1 No. Ø12 HOLE,
SUITABLE FOR
M10 CAPSCREWS
(BY OTHERS)



OPTIONAL SECURITY
PIN FOR UNSUPPORTED
GLASS RESTRAINT.

2 No. M5 X 20 HEX
SOCKET CSK SCREWS

NOTES/SPECIFICATION:

ALL FITTING COMPONENTS IN GRADE 304 STAINLESS STEEL
(SEE BELOW FOR FINISH OPTIONS)

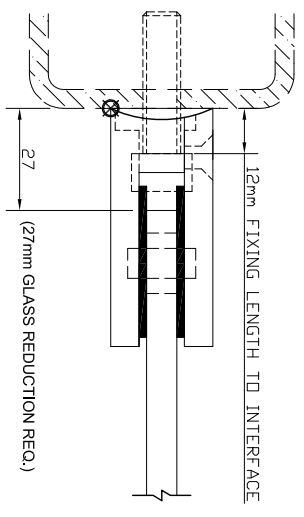
PRODUCT SUITABLE FOR 8 OR 10mm TOUGHENED GLASS PANES

FITTING SUPPLIED COMPLETE WITH:-

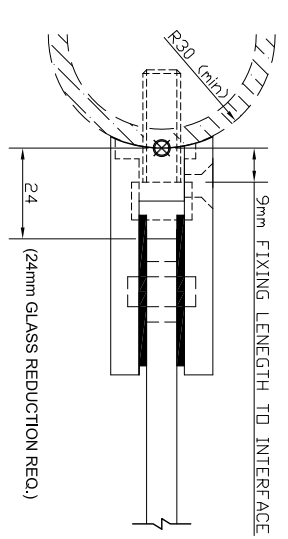
- 1) 4 No. BLACK RUBBER WASHERS TO SUITE SPECIFIED GLASS
- 2) 2 No. M5 X 20mm HEX SOCKET HEAD CSK SETSCREWS

NOTE - INTERFACE M10 CAPSCREW FIXINGS TO BE SUPPLIED BY OTHERS TO SUIT APPLICATION.

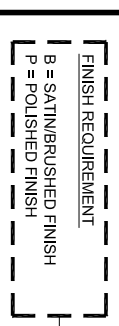
**EXAMPLE USE
FLAT FACE FIXED**
(SCALE 1:2 (A4))



**EXAMPLE USE
ON CURVED POSTS**
(SCALE 1:2 (A4))



SPECIFICATION INSTRUCTIONS:-



PRODUCT REF: SH / ATB / * / D

DESCRIPTION: DIMENSIONED ELEVATIONS AND REQUIRED GLASS PREP DETAIL

DRAWING REF: SH/ATB/X/D - 001B