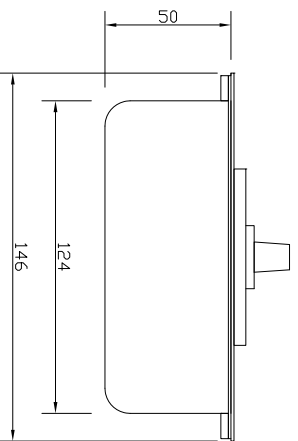
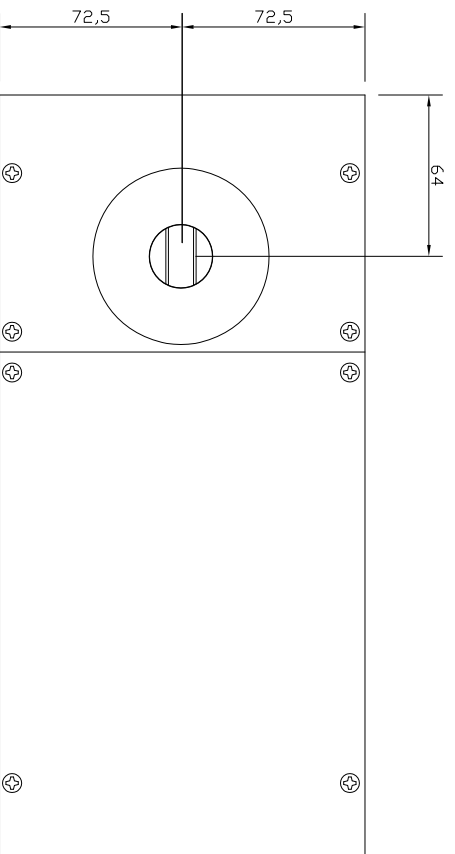
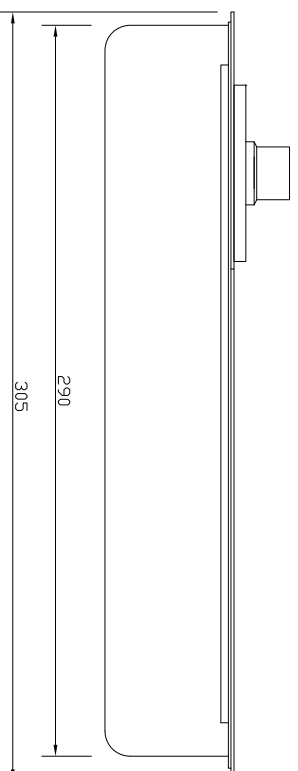


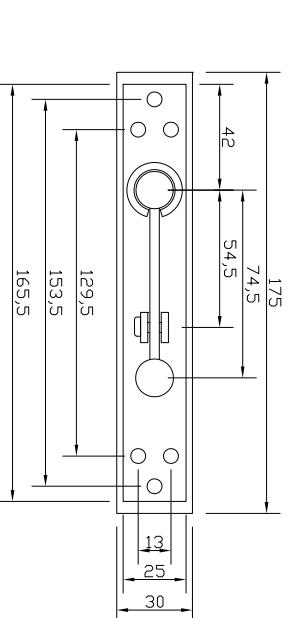
PLAN VIEW
ON FLOOR SPRING
(SCALE 1:2 (A4))



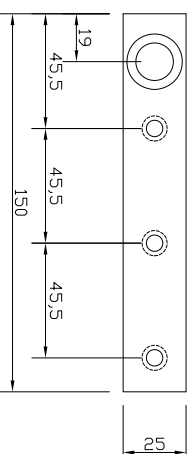
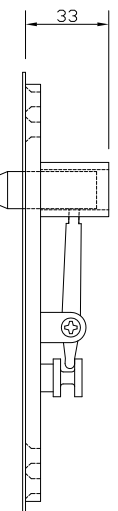
REAR VIEW
ON FLOOR SPRING
(SCALE 1:2 (A4))



REAR VIEW
ON FLOOR SPRING
(SCALE 1:2 (A4))



DETAILS OF MOVABLE TOP
RECESSED PIVOT
(SCALE 1:2 (A4))



DETAILS OF HEAD
PIVOT KEEP
(SCALE 1:2 (A4))



The Vision Group,
6 Barnes Close,
Brandon, Suffolk
IP27 0NY

TEL: +44 (0)1842 816086
FAX: +44 (0)1842 815515
WEB: www.spiralhardware.co.uk
E-MAIL: info@spiralhardware.co.uk

Copyright (c) - April 2008. All Rights Reserved

NOTES/SPECIFICATION:

THE FS1 FLOOR SPRING IS A DOUBLE ACTION FLOOR SPRING WHICH HAS BEEN DESIGNED TO SUIT THE REQUIREMENTS OF MANY DIFFERENT DOOR CONSTRUCTIONS METHODS E.G WOODEN, METAL OR TOUGHENED GLASS.

FEATURES

REDUCED BODY THICKNESS DEPTH OF 50mm FOR THINNER FLOOR SLABS. SIMPLE INSTALLATION. TWO STAGE DOOR CLOSING SPEED ADJUSTMENT 90° - 20° & 20° - 0° , 90 DEG HOLD OPEN FACILITY, MAX DOOR WEIGHT 120KG.

FS1 FLOOR SPRING SUPPLIED WITH:-

2No. ST/ST COVER PLATES

1No. ST/ST SPRING PLATE

1No. ADJUSTABLE TOP PIVOT

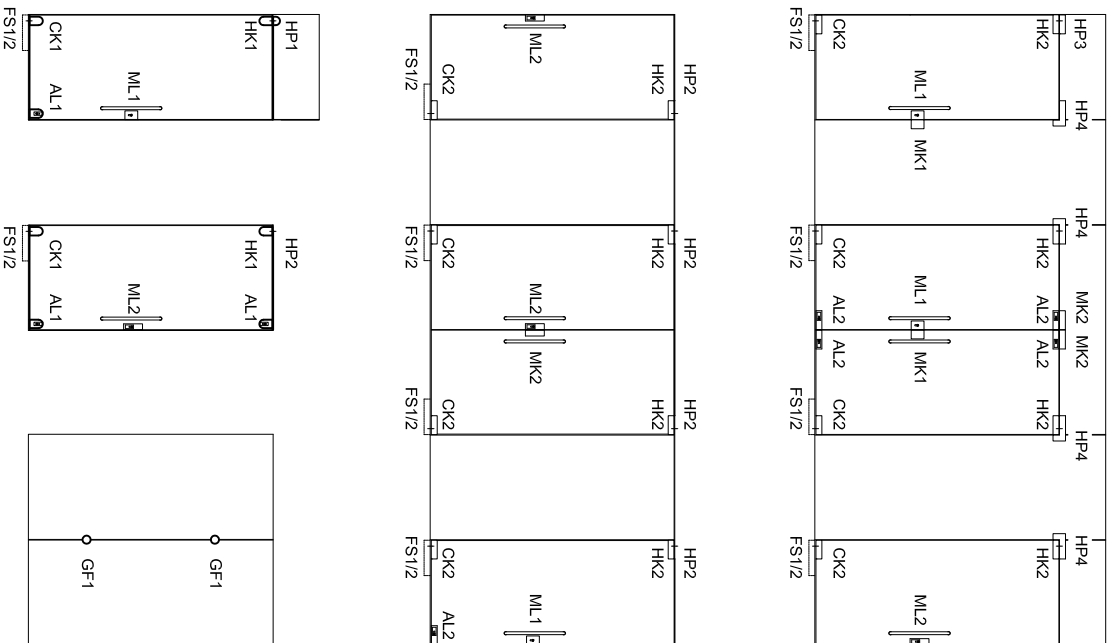
1No. HEAD PIVOT KEEP FOR FRAMED DOORS

1No. CILL PIVOT KEEP FOR FRAMED DOORS (NOT SHOWN ON DRAWING + 2No 0.8mm SHIMS)

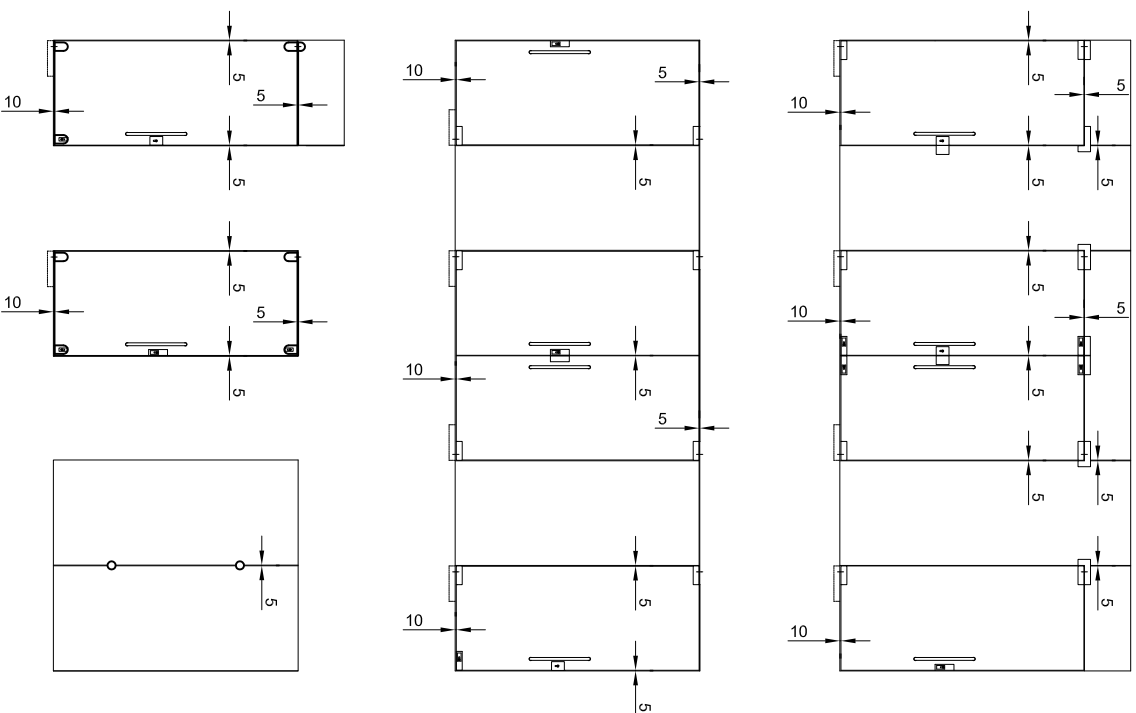
PRODUCT REF:	SH/ACD/FS1
DESCRIPTION:	DIMENSIONED ELEVATIONS AND ADDITIONAL PARTS
DRAWING REF:	SH/ACD/FS1 - 001

ACHILLES DOOR FITTING APPLICATION EXAMPLE

PRODUCT REFERENCE



CLEARANCE DIMENSIONS



The Vision Group,
6 Barnes Close,
Brandon, Suffolk
IP27 0NY

TEL: +44 (0)1842 816086
FAX: +44 (0)1842 815515
WEB: www.spiralhardware.co.uk
E-MAIL: info@spiralhardware.co.uk

Copyright (c) - April 2008. All Rights Reserved

NOTES/SPECIFICATION:

PRODUCT REF: SH/ACD/	
DESCRIPTION: ELEVATIONS SHOWING FITTINGS TYPES LOCATIONS	
DRAWING REF: SH/ACD/AE/001	