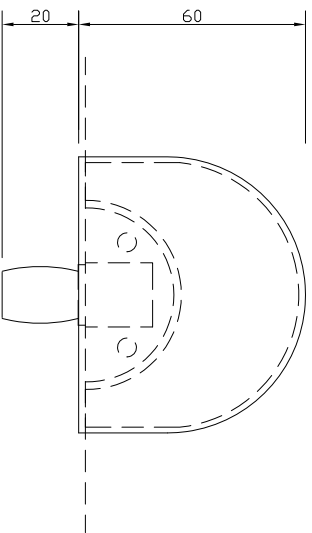
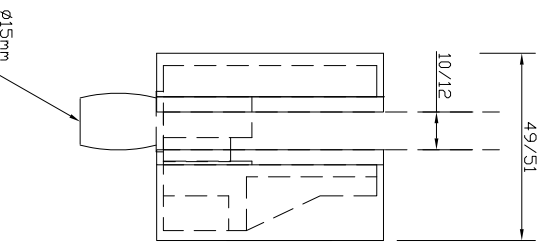


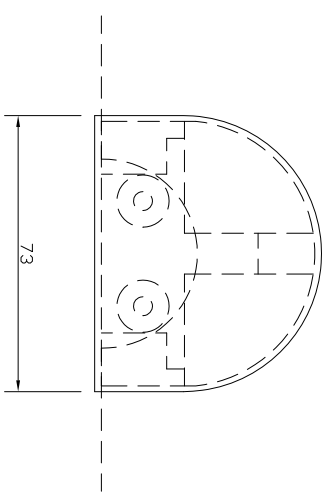
**FRONT VIEW
ON FITTING**
(SCALE 1:2 (A4))



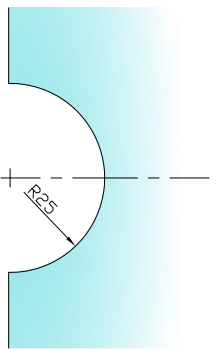
**SIDE VIEW
ON FITTING**
(SCALE 1:2 (A4))



**REAR VIEW
ON FITTING**
(SCALE 1:2 (A4))



**REQUIRED
GLASS PREP**
(SCALE 1:2 (A4))



The Vision Group, 6 Barnes Close, Brandon, Suffolk IP27 0NY
 TEL: +44 (0)1842 816086
 FAX: +44 (0)1842 815515
 WEB: www.spiralhardware.co.uk
 E-MAIL: info@spiralhardware.co.uk

Copyright (c) - April 2008. All Rights Reserved

NOTES/SPECIFICATION:

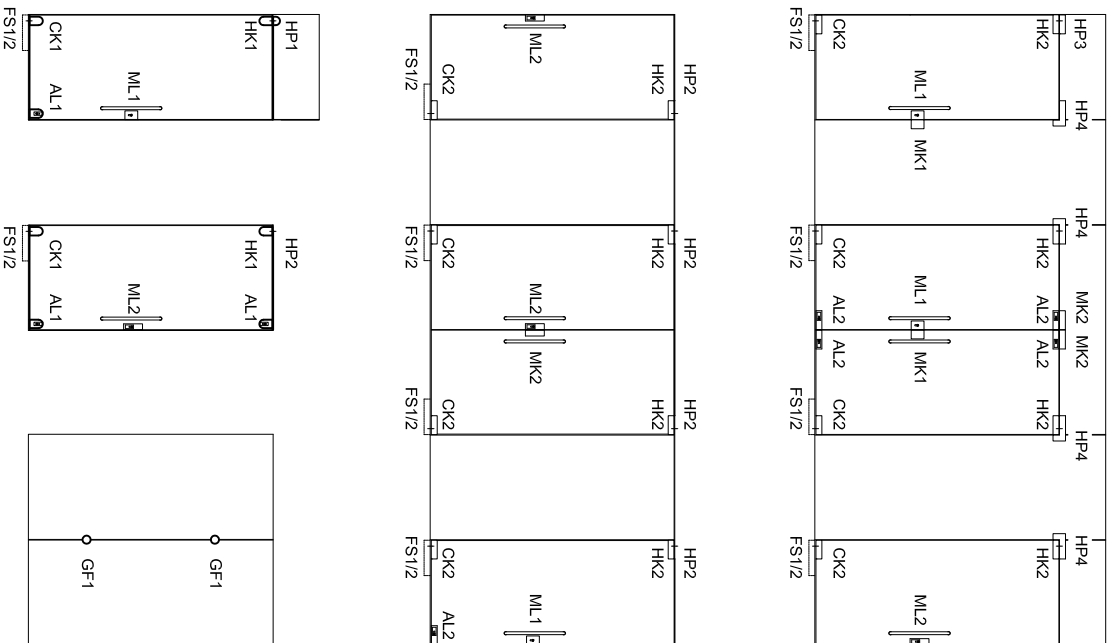
- ALL PATCH FITTING ARE SUPPLIED WITH GRADE 316 POLISHED STAINLESS STEEL PRESSED COVER PLATES.
- PRODUCT SUITABLE FOR 10mm OR 12mm TOUGHENED GLASS PANES.
- PATCH FITTING SUPPLIED COMPLETE WITH:-
- 1) 2 HEX KEYS FOR PATCH FITTING ASSEMBLY

NOTE:
EXTERNAL DIMENSIONS ON DRAWING INCLUDE COVER PLATES

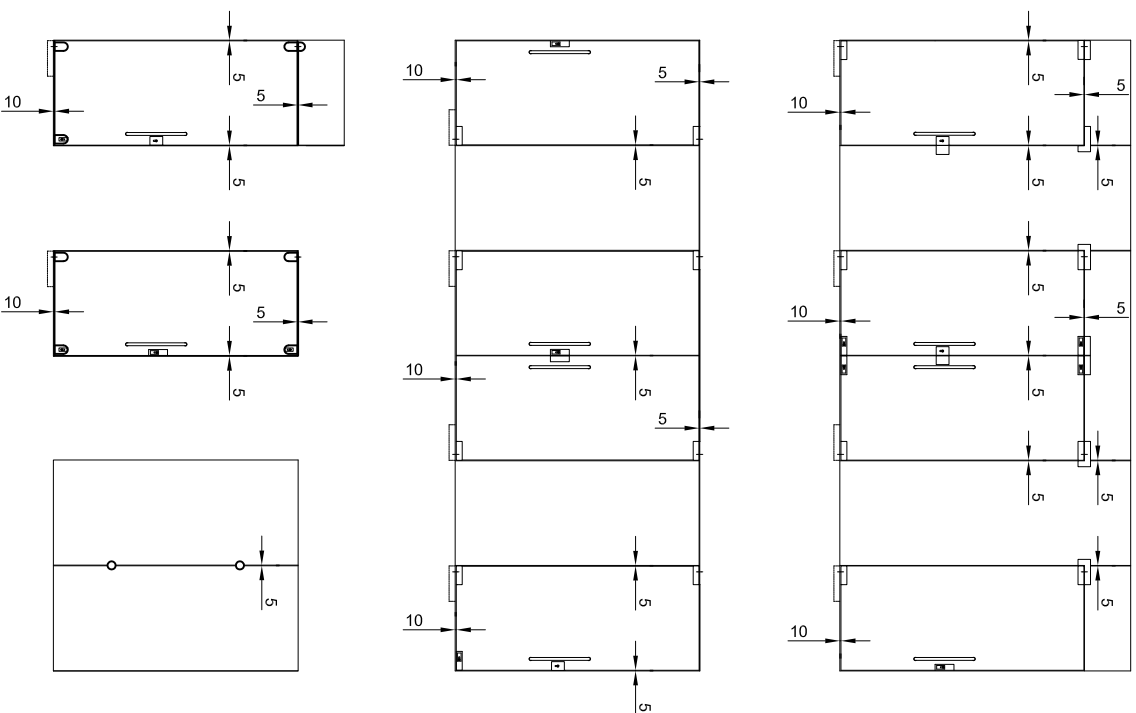
| | |
|---------------------|---|
| PRODUCT REF: | SH/ACD/HP1 |
| DESCRIPTION: | DIMENSIONED ELEVATIONS AND REQUIRED GLASS PREP DETAIL |
| DRAWING REF: | SH/ACD/HP1 - 001 |

ACHILLES DOOR FITTING APPLICATION EXAMPLE

PRODUCT REFERENCE



CLEARANCE DIMENSIONS



The Vision Group,
6 Barnes Close,
Brandon, Suffolk
IP27 0NY

TEL: +44 (0)1842 816086
FAX: +44 (0)1842 815515
WEB: www.spiralhardware.co.uk
E-MAIL: info@spiralhardware.co.uk

Copyright (c) - April 2008. All Rights Reserved

NOTES/SPECIFICATION:

| | |
|--|--|
| PRODUCT REF: SH/ACD/ | |
| DESCRIPTION: ELEVATIONS SHOWING FITTINGS TYPES LOCATIONS | |
| DRAWING REF: SH/ACD/AE/001 | |