



The Vision Group,  
6 Barnes Close,  
Brandon, Suffolk  
IP27 0NY

TEL: +44 (0)1842 816086  
FAX: +44 (0)1842 815515  
WEB: www.spiralhardware.co.uk  
E-MAIL: info@spiralhardware.co.uk

Copyright (c) - April 2008. All Rights Reserved

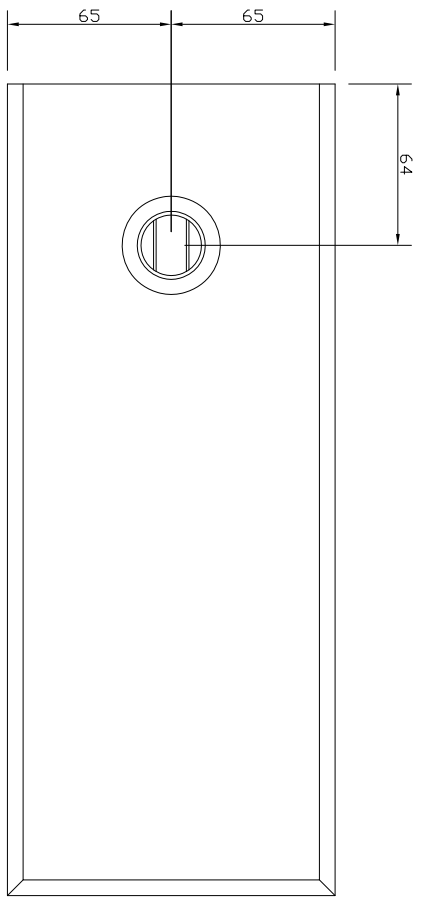
**NOTES/SPECIFICATION:**

THE FS2 FLOOR SPRING IS A DOUBLE ACTION FLOOR SPRING WHICH HAS BEEN DESIGNED TO SUIT THE REQUIREMENTS OF MANY DIFFERENT DOOR CONSTRUCTIONS METHODS E.G WOODEN, METAL OR TOUGHENED GLASS.

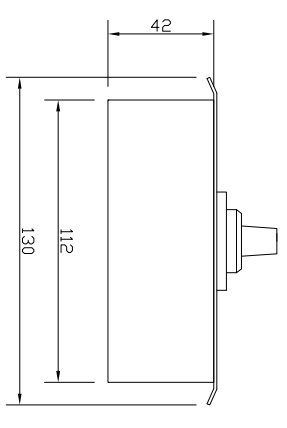
**FEATURES**

- REDUCED BODY THICKNESS DEPTH OF 42mm FOR THINNER FLOOR SLABS. SIMPLE INSTALLATION. TWO STAGE DOOR CLOSING SPEED ADJUSTMENT 90° - 20° & 20° - 0° 90 DEG HOLD OPEN FACILITY. MAX DOOR WEIGHT 110KG. MAX DOOR WIDTH 1100mm.
- FS2 FLOOR SPRING SUPPLIED WITH:-
- 2 No. ST/STL COVER PLATES
- 1No. ADJUSTABLE TOP PIVOT
- 1No. HEAD PIVOT KEEP FOR FRAMED DOORS
- 1No. C/LL PIVOT KEEP FOR FRAMED DOORS (NOT SHOWN ON DRAWING + 2No 0.8mm SHIMS)

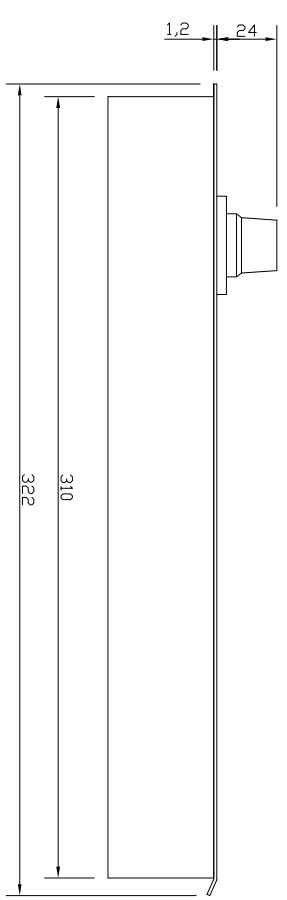
**PLAN VIEW  
ON FLOOR SPRING**  
(SCALE 1:2 (A4))



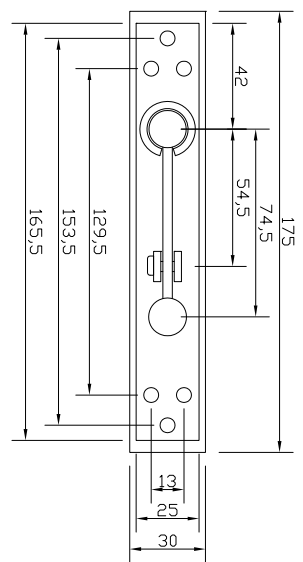
**REAR VIEW  
ON FLOOR SPRING**  
(SCALE 1:2 (A4))



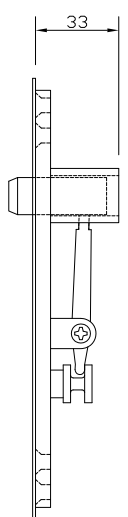
**REAR VIEW  
ON FLOOR SPRING**  
(SCALE 1:2 (A4))



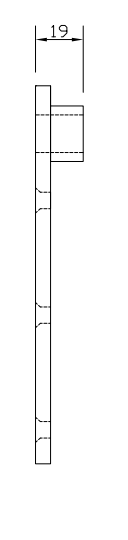
**REAR VIEW  
ON FLOOR SPRING**  
(SCALE 1:2 (A4))



**DETAILS OF MOVABLE TOP  
RECESSED PIVOT**  
(SCALE 1:2 (A4))



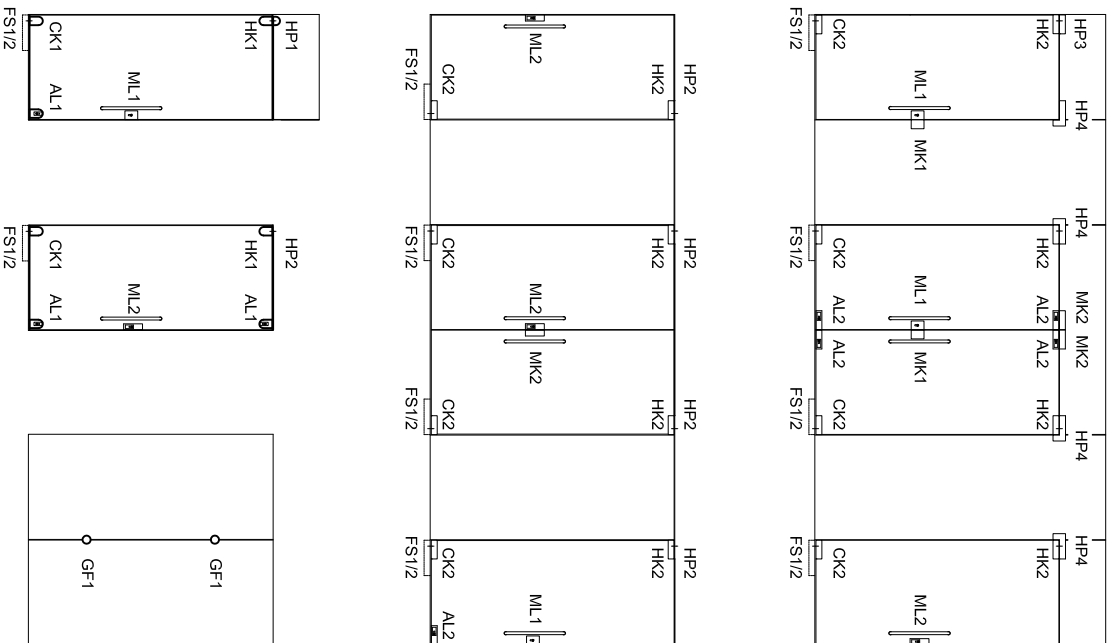
**DETAILS OF HEAD  
PIVOT KEEP**  
(SCALE 1:2 (A4))



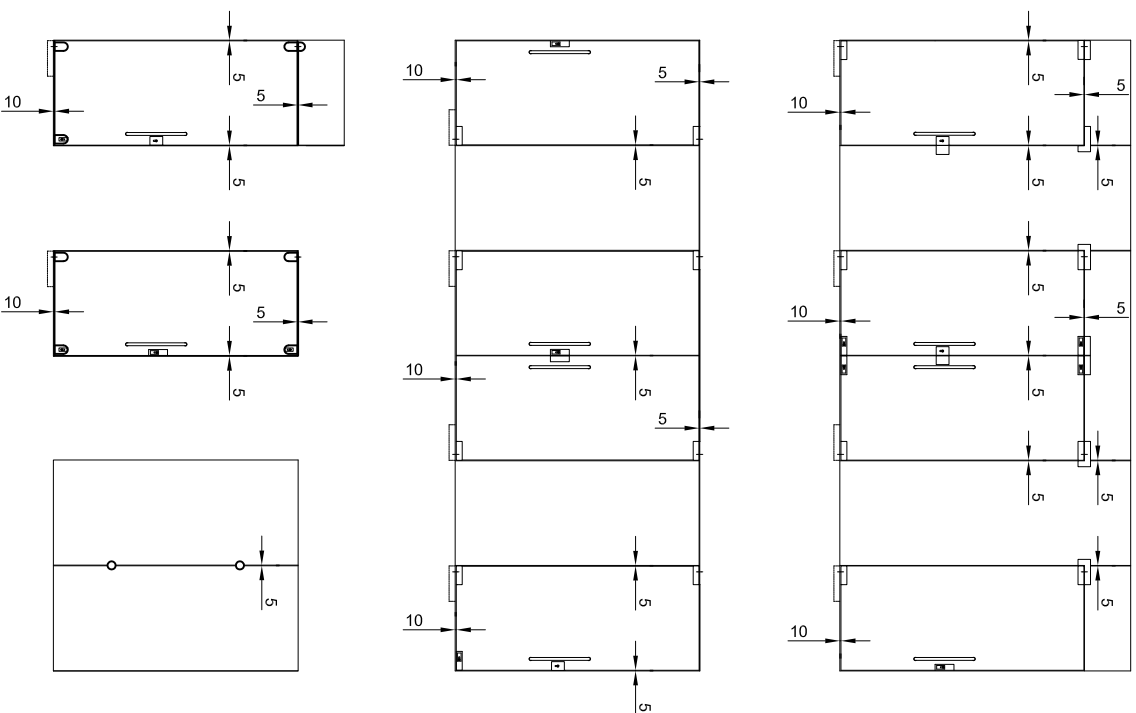
<b>PRODUCT REF:</b>	<b>SH/ACD/FS2</b>
DESCRIPTION:	DIMENSIONED ELEVATIONS AND ADDITIONAL PARTS
<b>DRAWING REF:</b>	<b>SH/ACD/FS2 - 001</b>

# ACHILLES DOOR FITTING APPLICATION EXAMPLE

## PRODUCT REFERENCE



## CLEARANCE DIMENSIONS



The Vision Group,  
6 Barnes Close,  
Brandon, Suffolk  
IP27 0NY

TEL: +44 (0)1842 816086  
FAX: +44 (0)1842 815515  
WEB: www.spiralhardware.co.uk  
E-MAIL: info@spiralhardware.co.uk

Copyright (c) - April 2008. All Rights Reserved

## NOTES/SPECIFICATION:

<b>PRODUCT REF:</b> SH/ACD/	
DESCRIPTION: ELEVATIONS SHOWING FITTINGS TYPES LOCATIONS	
DRAWING REF: SH/ACD/AE/001	