



The Vision Group,  
6 Barnes Close,  
Brandon, Suffolk  
IP27 0NY

TEL: +44 (0)1842 816086  
FAX: +44 (0)1842 815515  
WEB: [www.spiralhardware.co.uk](http://www.spiralhardware.co.uk)  
E-MAIL: [info@spiralhardware.co.uk](mailto:info@spiralhardware.co.uk)

Copyright (c) - April 2008. All Rights Reserved

**NOTES/SPECIFICATION:**

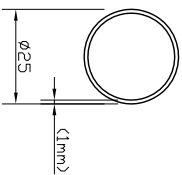
ALL THE BAR POLE COMPONENTS IN CHROME PLATED BRASS.

THE BAR POLE SUPPLIED SUITABLE FOR USE WITH THE FOLLOWING CONNECTORS:-

- SH/APH/T08 - (WALL CONNECTOR)
- SH/APH/T09 - (180 DEGREE INLINE GLASS CONNECTOR)
- SH/APH/T10 - (90 DEGREE CORNER GLASS CONNECTOR)
- SH/APH/T11 - (135 DEGREE CORNER GLASS CONNECTOR)
- SH/APH/T12 - (T JUNCTION GLASS CONNECTOR)

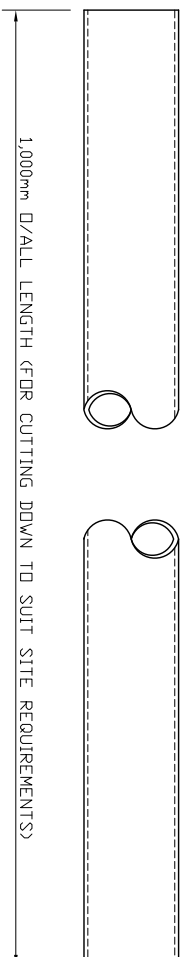
**END VIEW  
ON TIE BAR POLE**

(SCALE 1:2 (A4))



**SIDE/PLAN VIEW  
ON TIE BAR POLE**

(SCALE 1:2 (A4))



**PRODUCT REF: SH/APH/T06**

DESCRIPTION: DIMENSIONED ELEVATIONS AND CONNECTION DETAILS

\* \*

**DRAWING REF: SH/APH/T06 - 001**