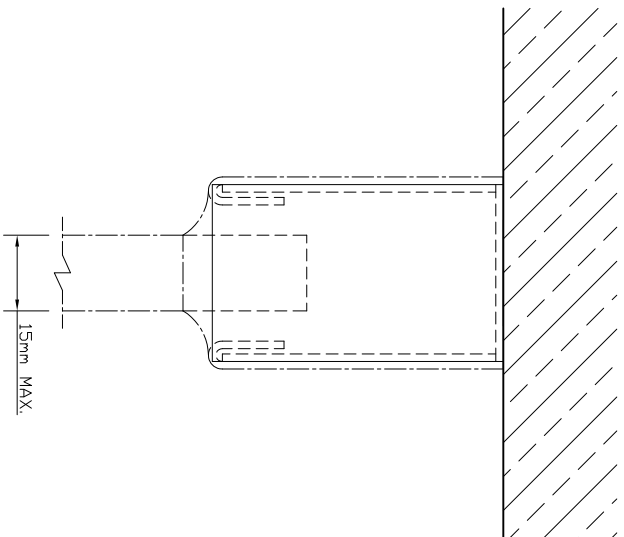
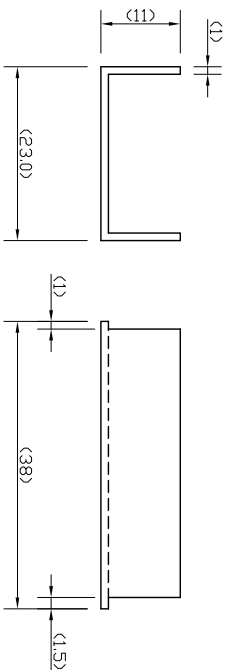


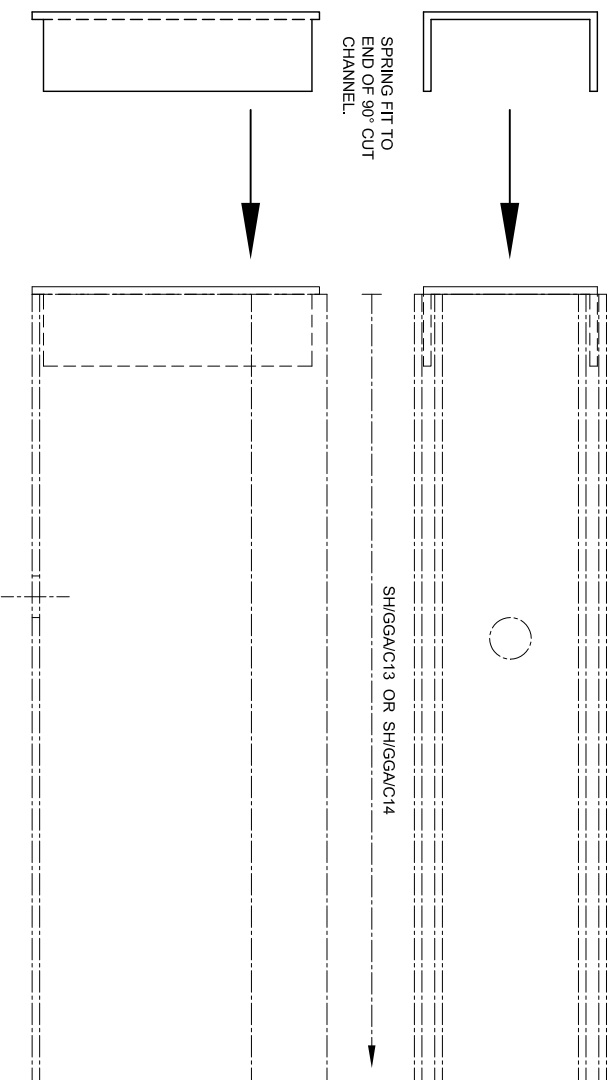
**END VIEW
ON CHANNEL**
(SCALE 1:1 (A4))



**END CAP
ELEVATIONS**
(SCALE 1:1 (A4))



**INSTALLATION
DETAILS**
(SCALE 1:1 (A4))



The Vision Group,
6 Barnes Close,
Brandon, Suffolk
IP27 0NY

TEL: +44 (0)1842 816086
FAX: +44 (0)1842 815515
WEB: www.spiralhardware.co.uk
E-MAIL: info@spiralhardware.co.uk

Copyright (c) - April 2008. All Rights Reserved

NOTES/SPECIFICATION:

CHANNEL END CAP SUPPLIED IN GRADE 304 STAINLESS STEEL.-

POLISHED FINISH

GLAZING CHANNEL SUITABLE FOR 15mm max. GLASS PANES

(NOTE CUSTOMER TO PROVIDE REQUIRED FIXINGS. PACKERS ARE NOT SUPPLIED WITH THE CHANNELS AS STANDARD)

| | |
|---------------------|--|
| PRODUCT REF: | SH/GGAC15 |
| DESCRIPTION: | DIMENSIONED ELEVATIONS AND PRODUCT DETAILS |
| DRAWING REF: | SH/GGAC15 - 001 |