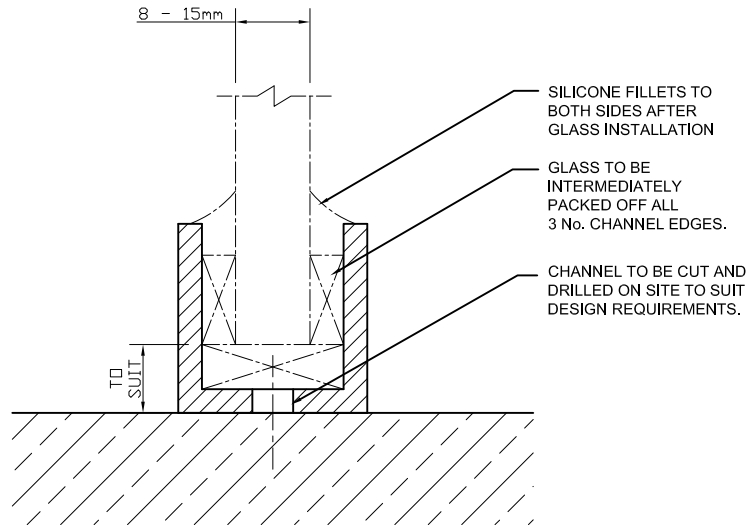


**GLAZING DETAIL
ON CHANNEL**

(SCALE 1:1 (A4))



The Vision Group,
6 Barnes Close,
Brandon, Suffolk
IP27 0NY

TEL: +44 (0)1842 816086
FAX: +44 (0)1842 815515
WEB: www.spiralhardware.co.uk
E-MAIL: info@spiralhardware.co.uk

Copyright (c) - April 2008, All Rights Reserved

NOTES/SPECIFICATION:

GLAZING CHANNEL SUPPLIED IN SILVER ANODISED EXTRUDED ALUMINIUM.

GLAZING CHANNEL SUITABLE FOR 8 TO 15mm GLASS PANES

GLAZING CHANNEL REQUIRES CUTTING AND DRILLING TO SUIT DESIGN REQUIREMENTS ON SITE.

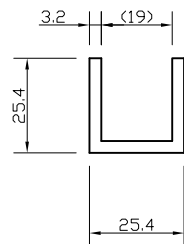
(NOTE CUSTOMER TO PROVIDE REQUIRED FIXINGS)

CAN BE UTILISED IN SHUFFLE GLAZED APPLICATIONS, IN CONJUNCTION WITH OUR CHANNEL:-

SH/GGA/C03 - (50mm DEEP SHUFFLE GLAZED CHANNEL)

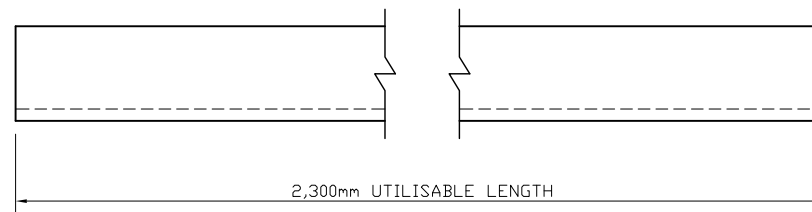
**END VIEW
ON CHANNEL**

(SCALE 1:2 (A4))



**SIDE VIEW
ON CHANNEL**

(SCALE 1:2 (A4))



PRODUCT REF:	SH/GGA/C01
DESCRIPTION:	DIMENSIONED ELEVATIONS AND PRODUCT DETAILS * *
DRAWING REF:	SH/GGA/C01 - 001A