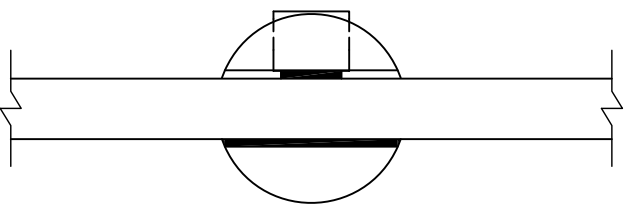
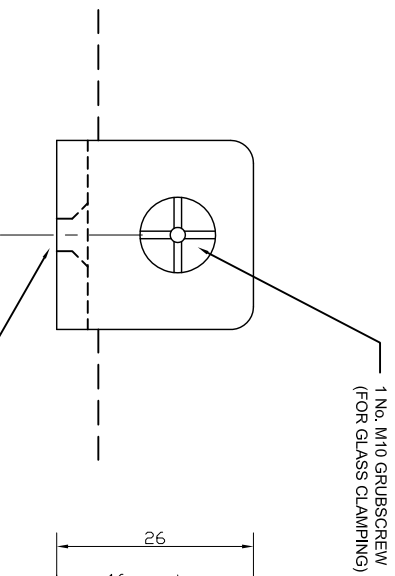


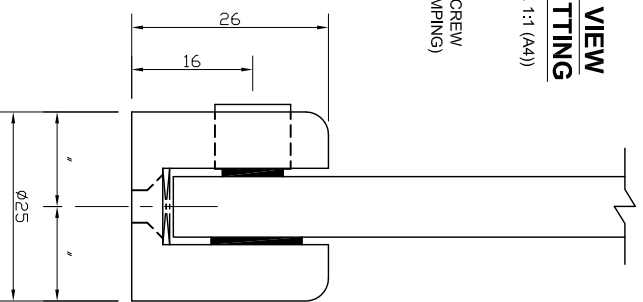
**PLAN VIEW
ON FITTING**
(SCALE 1:1 (A4))



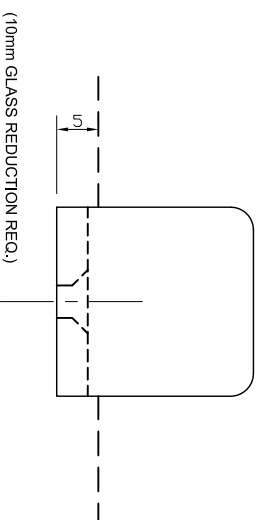
**FRONT VIEW
ON FITTING**
(SCALE 1:1 (A4))



**SIDE VIEW
ON FITTING**
(SCALE 1:1 (A4))



**REAR VIEW
ON FITTING**
(SCALE 1:1 (A4))



The Vision Group,
6 Barnes Close,
Brandon, Suffolk
IP27 0NY

TEL: **+44 (0)1842 816086**
FAX: **+44 (0)1842 815515**
WEB: **www.spiralhardware.co.uk**
E-MAIL: **info@spiralhardware.co.uk**

Copyright (c) - April 2008. All Rights Reserved

NOTES/SPECIFICATION:

ALL FITTING COMPONENTS IN CHROME PLATED BRASS.

PRODUCT SUITABLE FOR 6 TO 8mm TOUGHENED GLASS PANES.

FITTING SUPPLIED COMPLETE WITH:-

- 1) BLACK RUBBER GLAZING WASHERS
- 2) 1 No. M10 x 6mm ST/ST GRUB SCREW
- 4) 1 No. 10 x 40mm POSI DRIVE SCREW AND PLASTIC PLUG

(NOTE CUSTOMER TO PROVIDE ALTERNATIVE FIXINGS WHERE REQUIRED)

PRODUCT REF:	SH/MFC/B02
DESCRIPTION:	DIMENSIONED ELEVATIONS AND GLASS PREP DETAILS
DRAWING REF:	SH/MFC/B02 - 001