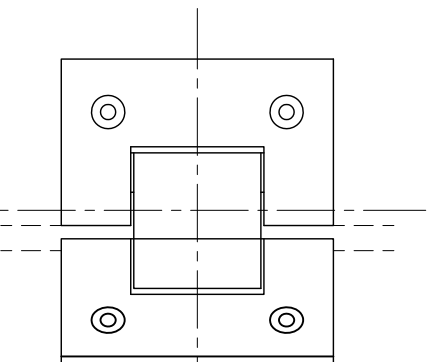
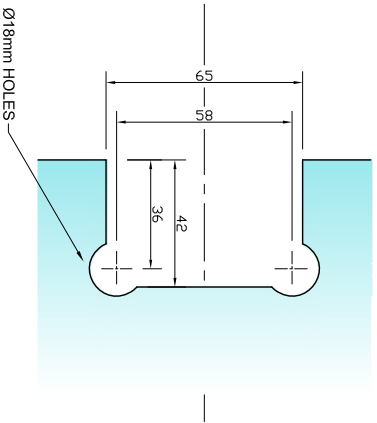


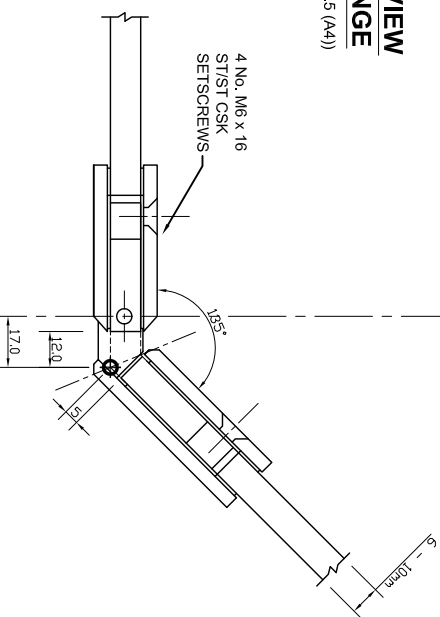
**REAR VIEW
ON HINGE**
(SCALE 1:2.5 (A4))



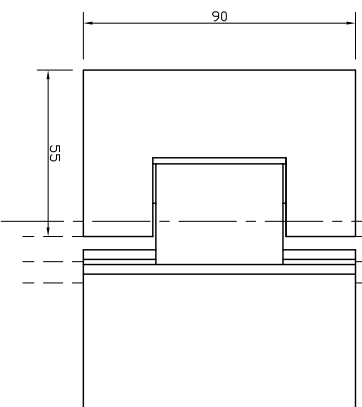
**REQUIRED
GLASS PREP**
(SCALE 1:2.5 (A4))



**PLAN VIEW
ON HINGE**
(SCALE 1:2.5 (A4))



**FRONT VIEW
ON HINGE**
(SCALE 1:2.5 (A4))



(GLASS REDUCTIONS REQ.
FROM OUTSIDE GLASS CORNER
DATUM HIGHLIGHTED)-
- 12mm (PREP 'A' DOOR GLASS)
- 5mm (PREP 'A' FIXED GLASS)

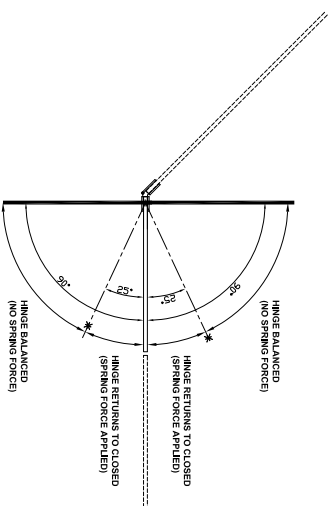


The Vision Group, 6 Barnes Close, Brandon, Suffolk IP27 0NY
 TEL: +44 (0)1842 816086
 FAX: +44 (0)1842 815515
 WEB: www.spiralhardware.co.uk
 E-MAIL: info@spiralhardware.co.uk

Copyright (c) - April 2008. All Rights Reserved

NOTES/SPECIFICATION:

- ALL HINGE COMPONENTS IN SATIN STAINLESS STEEL.
- PRODUCT SUITABLE FOR 6 TO 10mm TOUGHENED GLASS PANES.
- HINGE SUPPLIED COMPLETE WITH:-
 - 1) 4 No. x 1.25mm TRANSLUCENT RUBBER GLAZING WASHERS.
 - 2) 4 No. M6 x 16mm ST/ST HEX SOCKET HEAD CSK SETSCREWS
 - 3) 4 No. M6 x 16mm ST/ST HEX SOCKET HEAD CSK SETSCREWS
 - 4) 1 No. HEX SOCKET ALLEN KEY TO SUIT
- (NOTE CUSTOMER TO PROVIDE ALTERNATIVE FIXINGS WHERE REQUIRED)



PRODUCT REF:	SH/PAS/H04
DESCRIPTION:	DIMENSIONED ELEVATIONS AND REQUIRED GLASS PREP DETAIL
DRAWING REF:	SH/PAS/H04 - 001A